

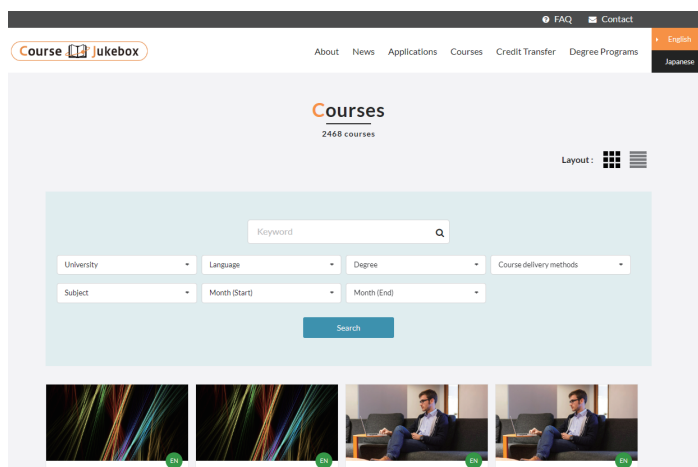
# Information for searching courses

Please use the two systems "Course Jukebox" and "Kdb" to help you find the courses you want to take in the University of Tsukuba.



## Course Jukebox (recommended for searching courses conducted in English)

<https://cj.tsukuba.ac.jp/courses/>

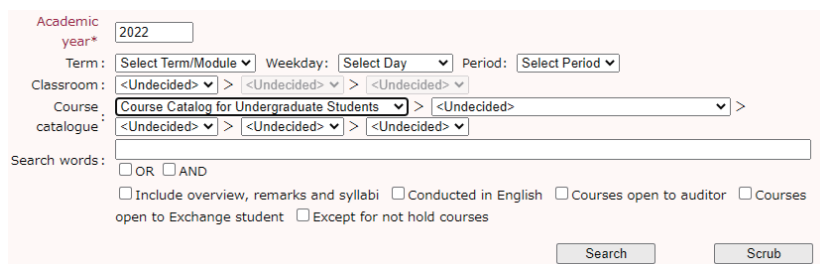


Select the applicable content from the following items and click "Search" button.

- ① University: University of Tsukuba
- ② Language: Select from English and Japanese
- ③ Degree: Choose from Bachelor, Master or Doctor
- ④ Subject: Select from the fields of your study
- ⑤ Month (Start): See the academic calendar and select start month (e.g. Fall ABC starts in Oct)
- ⑥ Month (End): Optional

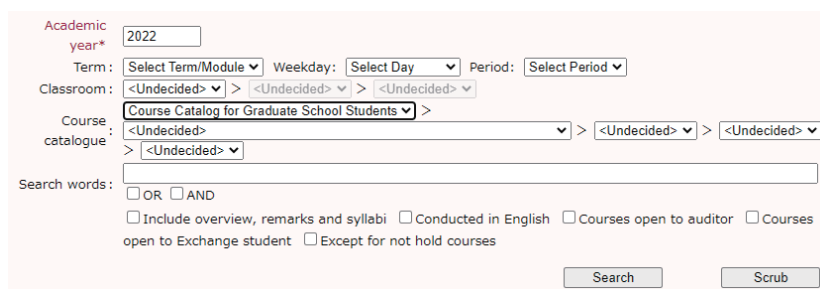
## Kdb Digital Syllabus (recommended for searching courses conducted in Japanese)

<https://kdb.tsukuba.ac.jp/>



### <For Undergraduate students>

- ① Select "Course Catalog for Undergraduate Students"
- ② Select "Foundation/Major Subjects"
- ③ Select School and College



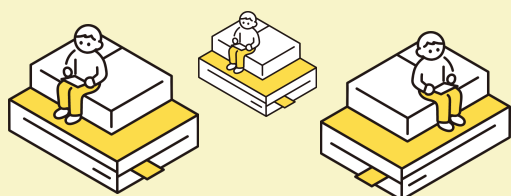
### <For Graduate students>

- ① Select "Course Catalog for Graduate School Students"
- ② Select Graduate school/Degree program (and Subprogram if any)

Or Use "Search words" by selecting "Include overview, remarks and syllabi"

Example for search words:

"JTP" –the courses which are conducted in English and exchange students are welcome to take "Conducted in English" (or "英語で授業" )



If you want to find the school and college or degree program at the University of Tsukuba, please refer to lists below.

List of Schools and Colleges (For undergraduate student)

List of Degree programs (For graduate student)

\*\*Exchange student is unable to take the course offered by Degree Program in Business Sciences / Law School Program / MBA Program in International Business.